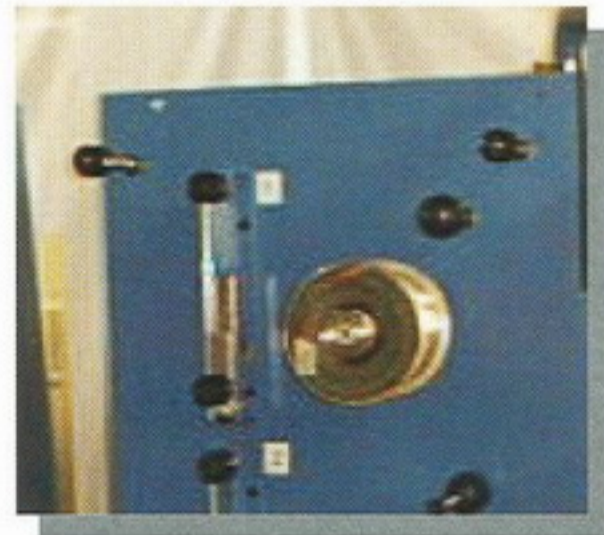


Single-wire Driven pay-off



W9-250M



High Speed driven pay-off suitable for the unwinding of Alu wire.
Especially developed for the processing in-line with high speed automatic winding machines.
DC Vector drive motor
CE compliant and approved

Technical specifications	W9-250M Driven Pay-off
Unwinding Speed	Self-adjustable up to 850 m/min
Ramp up-down	8 sec
Max reel size	DIN 250
Wire Types	Single end Aluminum
Wire Sizes and number of ends	0.10 to 0.25 mm – 1 end
Max full reel weight	20 Kg
Frame	8 positions
Dimensions	1200 x 1800 x 1150 mm.
Motor	1.1 Kw. Vector per position
Net weight for 8 positions	650 kg.
Voltage	To customer specifications

Wardwell Braiding Machine Company
1211 High Street
Central Falls, RI 02863 USA
TEL: 401-724-8800
FAX: 401-724-2690

Schnellflechter Berlin GmbH
Rhinstrasse 137
D-10315 Berlin Germany
TEL: 49-30-5499180
FAX: 49-30-54991845